

SITE PLAN

Revised Site Plan
 Submittal Date
 6-11-21



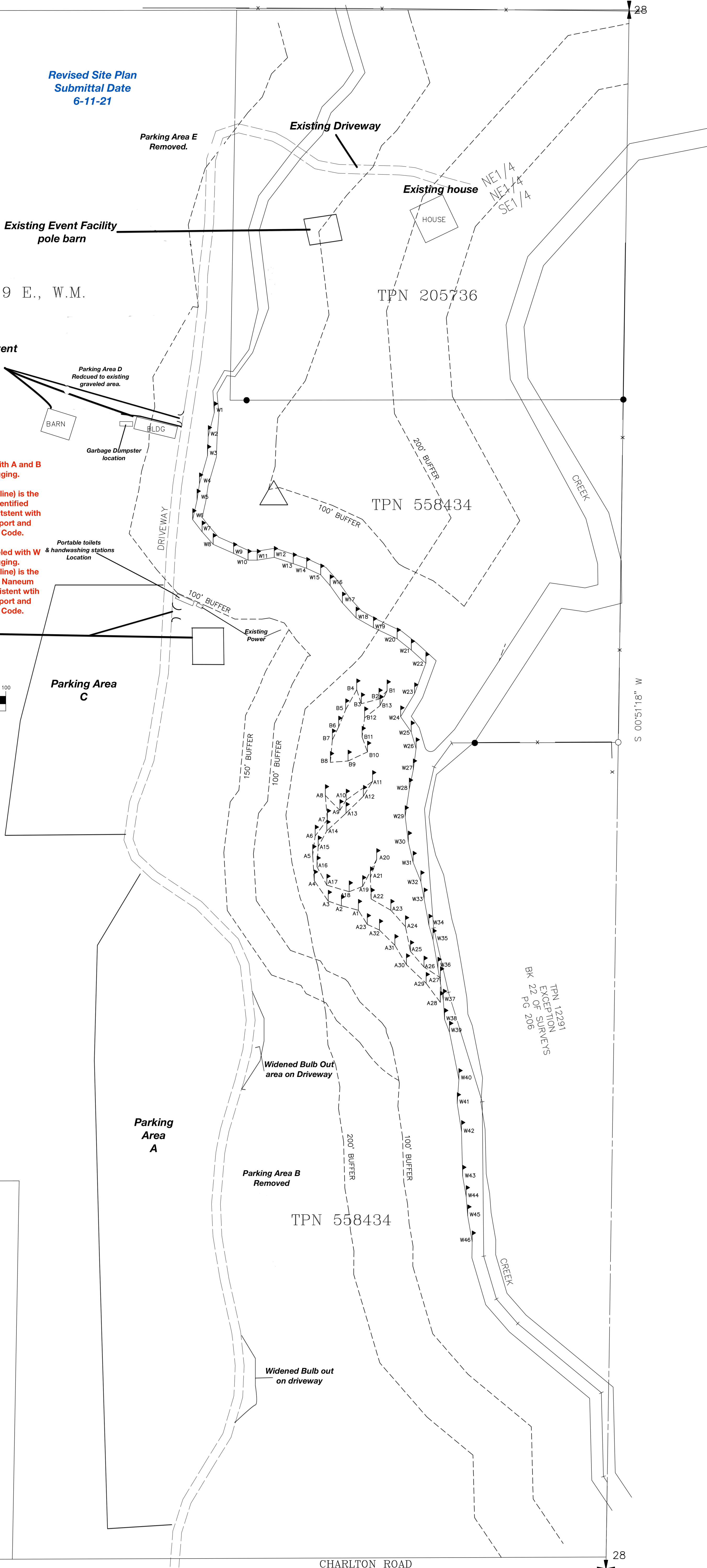
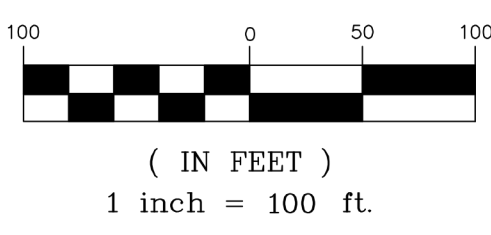
SEC. 29, T. 19 N., R. 19 E., W.M.

Existing Event
 Facility
 Barns
 &
 Access

- NOTES:**
- Wetlands labeled with A and B numerical flagging.
 - 150' Buffer (dotted line) is the distance from identified wetlands and Consistent with Critical Areas Report and Kittitas County Code.
 - Naneum Creek labeled with W numerical flagging.
 - 100' Buffer (dotted line) is the distance from the Naneum Creek OHWM consistent with Critical Areas Report and Kittitas County Code.

Existing Event Facility
 Barn & Access

GRAPHIC SCALE



TPN 12291
 EXCEPTION
 SURVEYS
 BK 22 OF SURVEYS
 PG 206

EXCEPTION